

Energy Efficiency Rating		
	Current	Potential
Very energy efficient - lower running costs		
(92 plus) A		
(81-91) B		
(69-80) C		
(55-68) D		
(39-54) E		
(21-38) F		
(1-20) G		
Not energy efficient - higher running costs		
England & Wales		
EU Directive 2002/91/EC		



Flat 3 24 St James' Road Tunbridge Wells

£1,150 PCM

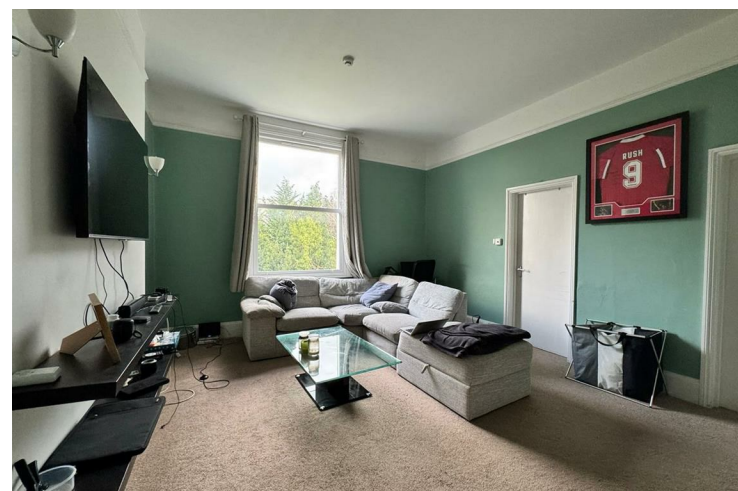
This wonderful LARGE one bedroom TOP FLOOR flat boasts fantastic HIGH CEILINGS, large living space and big double bedroom with built-in wardrobes. PARKING for one car. AVAILABLE NOW.

Agents Note: Whilst every care has been taken to prepare these particulars, they are for guidance purposes only. All measurements are approximate and are for general guidance purposes only and whilst every care has been taken to ensure their accuracy, they should not be relied upon and potential buyers/tenants are advised to recheck the measurements

Strood
Knights Templar Way
Strood
Kent
ME2 2ZD

01634 799201
Lindsey@templewharfpropertyc
templewharfpropertyconsultants

TEMPLE WHARF
PROPERTY CONSULTANTS



• One Bedroom Flat • Top Floor • Brand New Sash Windows • Parking Space • Communal Garden • Walking Distance to Town Cntr • Available Now

This wonderful LARGE one bedroom TOP FLOOR flat boasts fantastic HIGH CEILINGS, large living space and big double bedroom with built-in wardrobes. The wonderful sash windows to the rear were new last year and give you a fantastic view over the communal garden. To the front there is parking for one car.

Just a stones throw from Tonbridge Wells town centre is this delightful flat offers the perfect blend of comfort and convenience.

Tonbridge Wells is renowned for its picturesque surroundings and vibrant community, making it an excellent choice for those who appreciate both nature and urban amenities. With local shops, cafes, and parks just a stone's throw away, residents can enjoy a fulfilling lifestyle in this beautiful part of Kent.

This flat presents a wonderful opportunity for anyone looking to settle in a desirable location, combining modern living with the charm of a historic town.

